

Case Briefing

You're the on-call physician for obstetrics today in a rural 1A maternity site (no local cesarean section capabilities), and the nearest urban centre is 520 km away. It's mid-December, and there is a massive snowstorm outside. You stoked the fire before bed, and you are now sound asleep. You get a call from the hospital at 0230. Nurse: "We just had a woman come in off the highway. She's pregnant and at 39 weeks. She's not in labour but is tachycardic and has a fever."

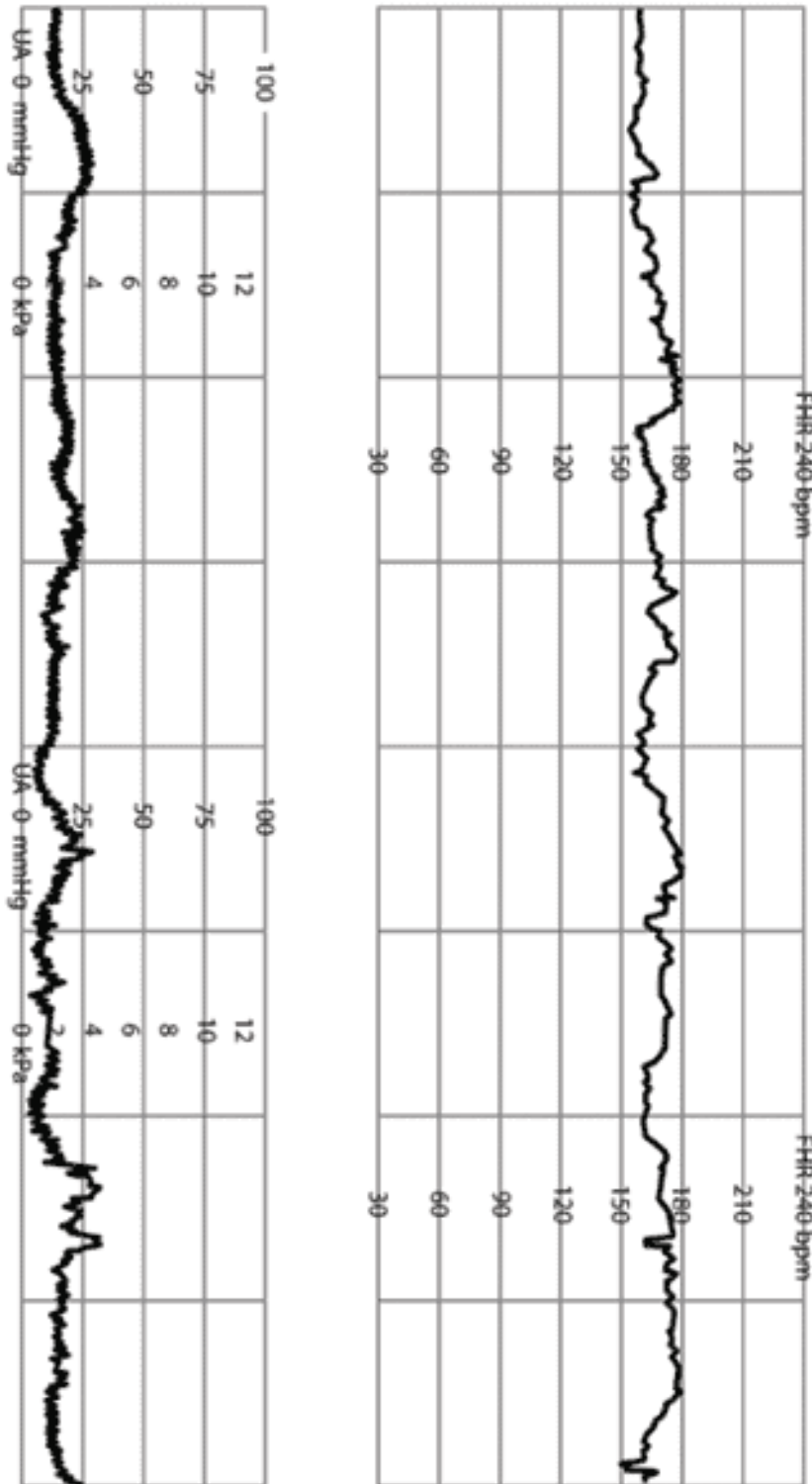
35 y/o woman (Gravida 3, Para 0) presents to the ED with her husband at 39 weeks gestation. Husband: "She's been sweating profusely, shivering, and weak for the past few hours. I got her here as fast as I could." She has a fever of 38.6 degrees Celsius, and her heart rate is 125 bpm. She is not having contractions but mentioned feeling "leaking" yesterday morning.

She's been receiving prenatal care from another community approximately 1230 km away. She's had a normal prenatal course, has been well throughout the pregnancy, is nulliparous, and is carrying a singleton pregnancy. She's Rh positive and GBS negative. She has no allergies, does not take any medications, and her family and medical history are insignificant. She does not smoke or drink alcohol.

The other physician, an RN, and an RPN are tied up in the ER with an acute trauma. The only people you have available for assistance are the RN and the woman's husband.

Patient Chart					
Name: Anna Zugasti	Age: 35	Gender: F	Weight: 89.3 kg	Height: 148 cm	GA: 39 Weeks
Temp: 39.2	HR: 110 bpm	BP: 114/74	RR: 24/min	O₂Sat: 99%	GCS: 15
Presenting complaint: Fever.					

Fetal Heart Rate (FHR) Tracing #1

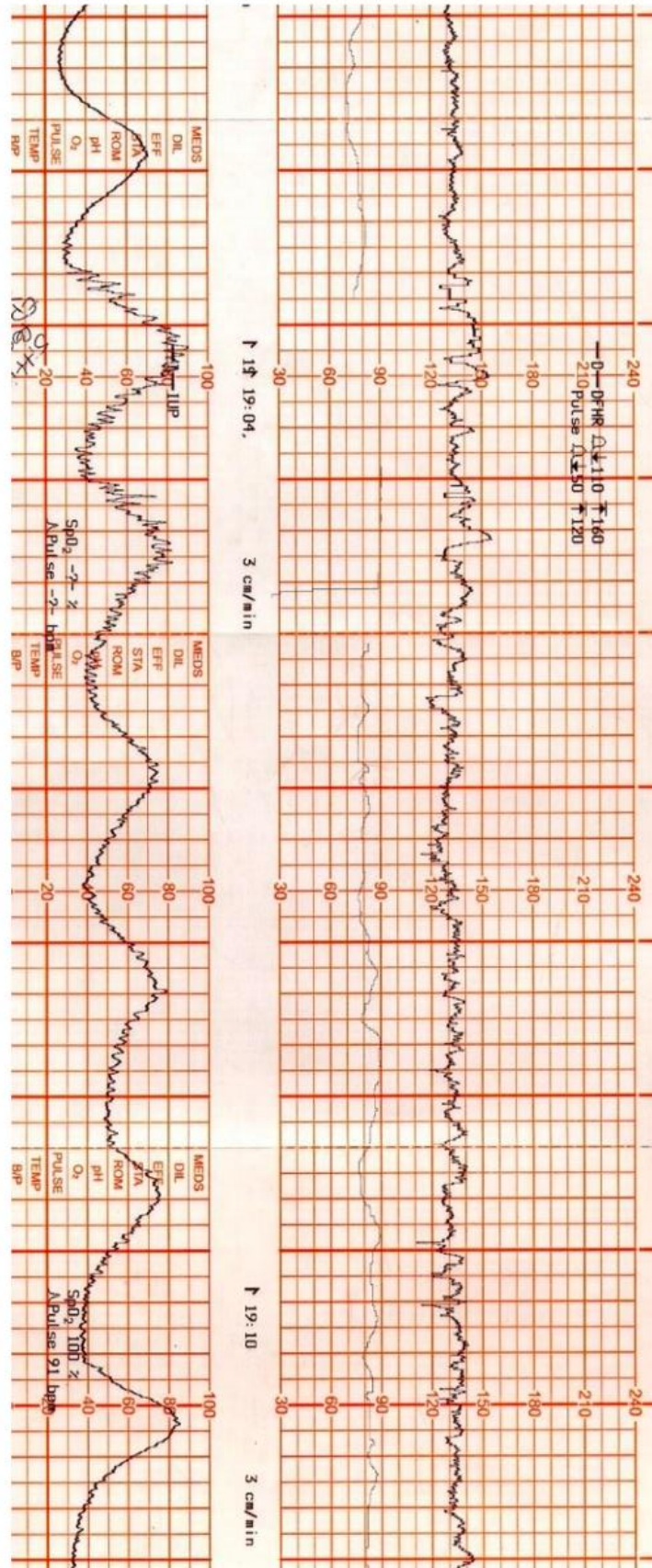


Reference(s):

Online Figures A through L adapted from Bailey RE. Intrapartum fetal surveillance. In: Leeman L, ed. Advanced Life Support in Obstetrics Program: Provider Course Syllabus. Leawood, Kan.: American Academy of Family Physicians; 2009.

Bailey RE. Intrapartum fetal monitoring. Am Fam Physician. 2009 Dec 15;80(12):1388-96. PMID: 20000301.

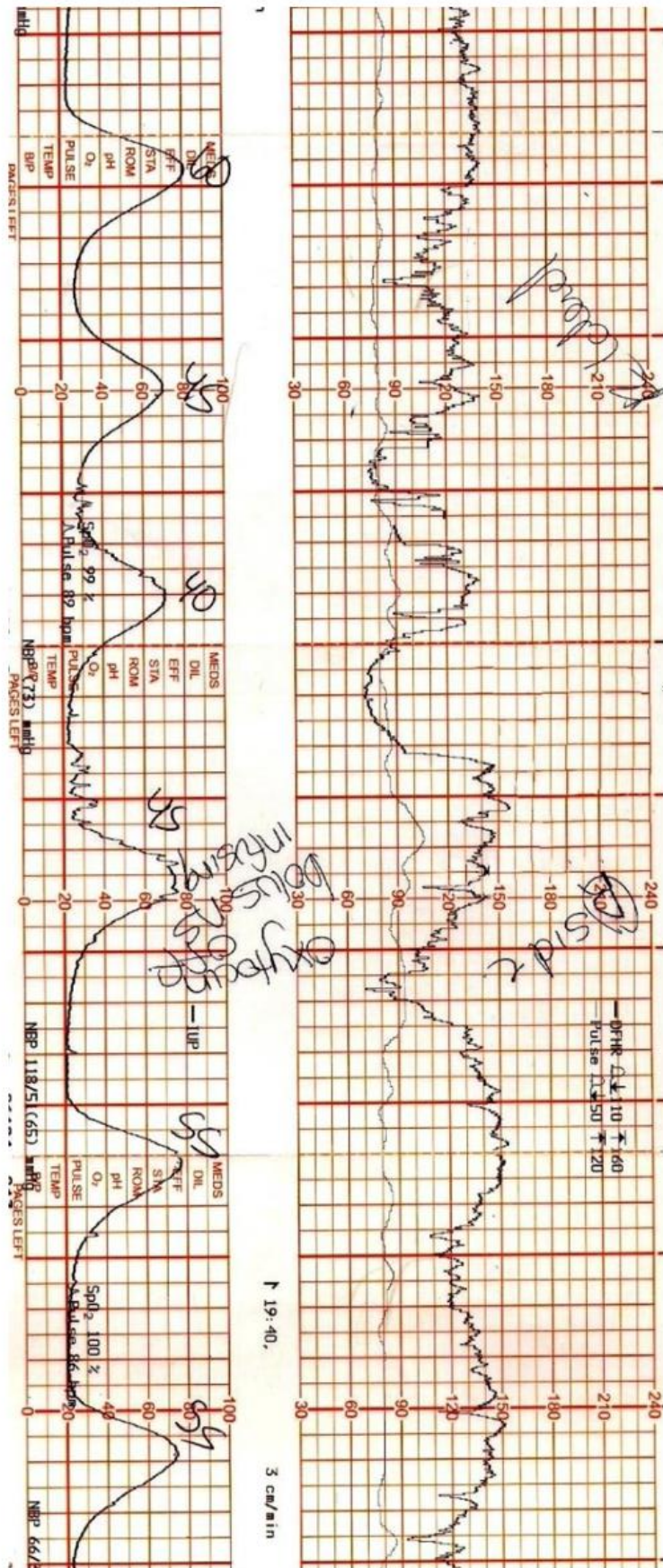
OPTION 1 - Fetal Heart Rate (FHR) Tracing



Reference(s):

Society of Obstetricians and Gynecologists of Canada. ALARM Manual, 28th Ed. 2022.

OPTION 2 - Fetal Heart Rate (FHR) Tracing



Reference(s):

Society of Obstetricians and Gynecologists of Canada. ALARM Manual, 28th Ed. 2022.